



Recombinant Human KLK10 (C-6His)

Catalog # EPT102

Expression Host Human Cells

DESCRIPTION Recombinant Human Kallikrein 10 is produced by our Mammalian expression system and the target gene encoding Ala31-Asn276 is expressed with a 6His tag at the C-terminus.

Accession AAH02710.1

Synonyms Kallikrein-10; Normal Epithelial Cell-Specific 1; Protease Serine-Like 1; KLK10; NES1; PRSSL1

Mol Mass 27.98 KDa

AP Mol Mass 34 KDa, reducing conditions

Purity Greater than 95% as determined by reducing SDS-PAGE.

Endotoxin Less than 0.1 ng/μg (1 EU/μg) as determined by LAL test.

FORMULATION Supplied as a 0.2 μm filtered solution of 20mM Tris-HCl, 150mM NaCl, pH 8.0.

RECONSTITUTION





SHIPPING

The product is shipped on dry ice/polar packs.

Upon receipt, store it immediately at the temperature listed below.

STORAGE

Store at $\leq -70^{\circ}\text{C}$, stable for 6 months after receipt.

Store at $\leq -70^{\circ}\text{C}$, stable for 3 months under sterile conditions after opening.

Please minimize freeze-thaw cycles.

BACKGROUND

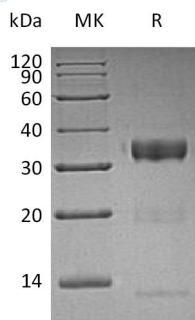
Kallikreins are a subgroup of Serine Proteases having diverse physiological functions. Growing evidence suggests that many Kallikreins are implicated in carcinogenesis and some have potential as novel cancer and other disease biomarkers. This gene is one of the fifteen Kallikrein subfamily members located in a cluster on chromosome 19. Its encoded protein is secreted and may play a role in suppression of tumorigenesis in breast and prostate cancers. Alternate splicing of this gene results in multiple transcript variants encoding the same protein.





ELK Biotechnology

SDS-PAGE



+86-27-59760950

ELKbio@ELKbiotech.com

www.elkbiotech.com

23-2, No.388 Gaoxin 2nd Road, Wuhan East Lake Hi-tech Development Zone, Hubei, P.R.C