



CXCR4 rabbit pAb

Cat No.:ES20775

For research use only

Overview

Product Name	CXCR4 rabbit pAb
Host species	Rabbit
Applications	WB;IHC;IF
Species Cross-Reactivity	Human;Rat;Mouse
Recommended dilutions	WB 1:1000-2000, IHC 1:100-200
Immunogen	Synthetic Peptide of CXCR4 AA range: 203-253
Specificity	CXCR4 protein(A220) detects endogenous levels of CXCR4
Formulation	Liquid in PBS containing 50% glycerol, 0.5% BSA and 0.02% sodium azide.
Storage	Store at -20°C. Avoid repeated freeze-thaw cycles.
Protein Name	C-X-C chemokine receptor type 4 (CXC-R4) (CXCR-4) (FB22) (Fusin) (HM89) (LCR1) (Leukocyte-derived seven transmembrane domain receptor) (LESTR) (NPYRL) (Stromal cell-derived factor 1 receptor) (SDF-1 r
Gene Name	CXCR4
Cellular localization	Cell membrane ; Multi-pass membrane protein . Cell junction. Early endosome. Late endosome. Lysosome. In unstimulated cells, diffuse pattern on plasma membrane. On agonist stimulation, colocalizes with ITCH at the plasma membrane where it becomes ubiquitinated. In the presence of antigen, distributes to the immunological synapse forming at the T-cell-APC contact area, where it localizes at the peripheral and distal supramolecular activation cluster (SMAC).
Purification	The antibody was affinity-purified from rabbit antiserum by affinity-chromatography using epitope-specific immunogen.
Clonality	Polyclonal
Concentration	1 mg/ml
Observed band	50kD





Human Gene ID

7852

Human Swiss-Prot Number

P61073

Alternative Names

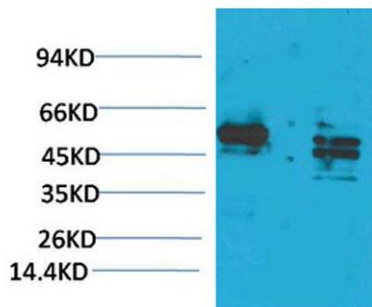
CXCR4; C-X-C chemokine receptor type 4; CXC-R4; CXCR-4; FB22; Fusin; HM89; LCR1;

Background

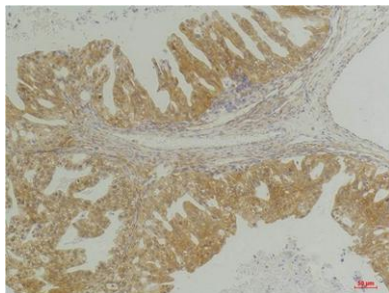
Leukocyte-derived seven transmembrane domain receptor; LESTR; NPYRL; Stromal cell-derived factor 1 receptor; SDF-1 receptor; CD antigen CD184 C-X-C motif chemokine receptor 4(CXCR4) Homo sapiens This gene encodes a CXC chemokine receptor specific for stromal cell-derived factor-1. The protein has 7 transmembrane regions and is located on the cell surface. It acts with the CD4 protein to support HIV entry into cells and is also highly expressed in breast cancer cells. Mutations in this gene have been associated with WHIM (warts, hypogammaglobulinemia, infections, and myelokathexis) syndrome. Alternate transcriptional splice variants, encoding different isoforms, have been characterized. [provided by RefSeq, Jul 2008],

Fat Hela
brain

Western blot analysis of 1) Rat Brain Tissue, 2)Hela, with CXCR4 Rabbit pAb diluted at 1:2,000.

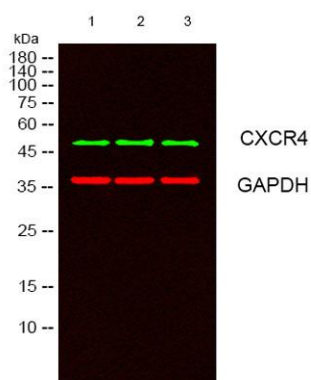
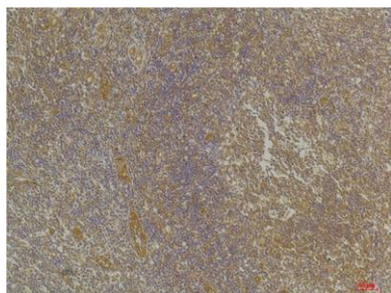


Immunohistochemical analysis of paraffin-embedded Human Breast Carcinoma using CXCR4Rabbit pAb diluted at 1:200.





Immunohistochemical analysis of paraffin-embedded Human Tonsil Tissue using CXCR4 Rabbit pAb diluted at 1:200.



Western blot analysis of lysates from 1) Rat Brain Tissue, 2) HeLa, 3) HEK293 cells, (Green) primary antibody was diluted at 1:1000, 4° over night, secondary antibody (cat:RS23920) was diluted at 1:10000, 37° 1 hour. (Red) GAPDH Monoclonal Antibody(2B8) (cat:YM3029) antibody was diluted at 1:5000 as loading control, 4° over night, secondary antibody (cat:RS23710) was diluted at 1:10000, 37° 1 hour.

